

CRAFTED WITH PRIDE  IN THE USA

RH PETERSON COMPANY | FIRE MAGIC PREMIUM OUTDOOR GRILLS COLLECTION CATALOG 2012



FIREMAGIC

FIREMAGIC[®]

PREMIUM OUTDOOR GRILLS

FIREMAGIC®





WELCOME TO

FIREMAGIC[®]

From the moment you light a Fire Magic Premium Grill, you know you're on to something special. Under the gleaming hood is a finely crafted, serious cooking machine designed to ignite your outdoor cooking experience. These all stainless steel beauties boast ultra-durable cast stainless steel burners, cooking grids of stainless steel and the highest BTUs to ensure the most juicy, flavorful grilled foods imaginable.

The most discerning grill enthusiasts find that Fire Magic is not just a grill, it's a tradition – a tradition of inviting friends and family to celebrate birthdays, holidays, anniversaries, graduations and simple, casual get-togethers on a warm summer day. Unwind on a lazy afternoon at the end of a hectic week and enjoy a leisurely meal of grilled meats and vegetables with guests. Savor the sunset with a thick steak and a glass of cabernet or a juicy burger with grilled onions and a refreshing soda.

Food has always been an integral part of our celebrations. At Fire Magic we understand just how important good food is and how the right preparation makes all the difference. With Fire Magic's 5 Ways to Cook, you can grill, rotisserie cook, infrared sear, smoke and even charcoal grill with no mess.

For this reason, we continue to concentrate on manufacturing the best grill you can buy. Born a barbecue grill, the Fire Magic line is engineered and manufactured right here in the USA. Fire Magic Premium Grills and accessories have combined remarkable craftsmanship and state-of-the-art technology to set the industry standard for 75 years.

Ignite your outdoor cooking experience, invite friends and family to celebrate, and let Fire Magic inspire you to create new family traditions.

» FEATURE HIGHLIGHTS

- » Cast stainless steel “E” burners - guaranteed for life
- » Most BTU’s & heat per sq. in. Heats fast-stays hot!
- » Master Power Switch turns off electrical system when not in use
- » Recessed Quantum backburner for larger size rotisserie cooking
- » Built-in storage brackets for rotisserie spit rod
- » Roller ball-bearings support rotisserie spit rod with super-high-torque motor & (2) 4 skewer meat holders with heavy counter-balance
- » 16-gauge stainless steel, flavor grids are engineered for durability and even heat distribution
- » Heat zone separators isolate cooking zones so food in each zone may be grilled at different temperatures
- » Feather-Lite, easy-lift oven hood with spring assist
- » Integral, and removable, oven warming rack for light cooking or warming foods
- » Customized stainless steel name plaque to personalize your grill
- » Built-in grill is field convertible natural gas/propane
- » Optional Magic View Window to check on food without lifting hood
- » Optional Infrared Burner
- » Optional exclusive Motorized Hood
- » Optional Remote Receiver (Model 3566) displays temperature readings from up to 50 feet from the grill
- » Meat Probe
- » Easy to use Drip Collection System
- » 12” Deep Fire Box

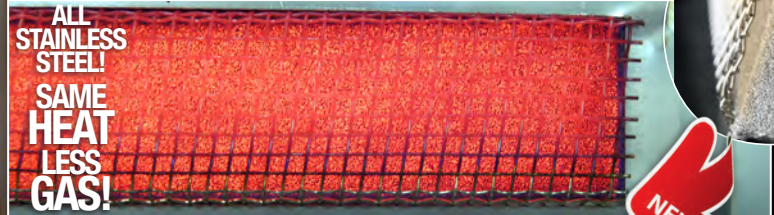


ECHELON

DIAMOND SERIES



ALL
STAINLESS
STEEL!
SAME
HEAT
LESS
GAS!



FIRE MAGIC INTRODUCES THE ALL NEW
QUANTUM BACK BURNER



BLUE BACKLIT KNOBS



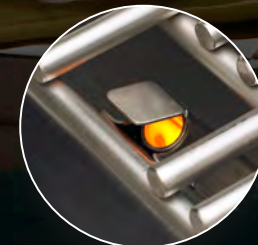
SLEEK LINES &
CONTOURED FACE



WOODCHIP SMOKER DRAWER



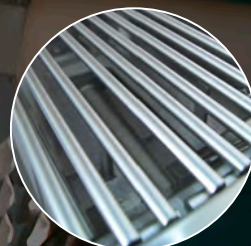
MAGIC VIEW WINDOW



HOT SURFACE IGNITION



HALOGEN LIGHTS



HEAVY DUTY STAINLESS
STEEL COOKING GRIDS



MULTI-COLORED
BACKLIT THERMOMETER



EXCLUSIVE STAINLESS
STEEL "E" BURNERS



Models 790i-4E1N Shown
*shown with 32814 Echelon Double Side Burner, 43830S Premium
Masonry Drawer, & DC790-CS-84C Pre-Fab Island*

ECHELON

DIAMOND SERIES

Built-In Grills



MODEL: E1060i-4E1N-W*

COOKING SURFACE	1056 sq. inches [48" x 22"]
BTU's	115,000 Primary + (2) 11,000 Backburners
CUT-OUT	50" w x 23½" d x 12" h



MODEL: E790i-4E1N*

COOKING SURFACE	792 sq. inches [36" x 22"]
BTU's	99,000 Primary + 13,000 Backburner
CUT-OUT	37" w x 23½" d x 12" h



MODEL: E660i-4E1N*

COOKING SURFACE	660 sq. inches [30" x 22"]
BTU's	78,000 Primary + 11,000 Backburner
CUT-OUT	31¼" w x 23½" d x 12" h

**All models available in natural gas or propane.*



Model 1060s-4E1N-51-W Shown

ECHELON

DIAMOND SERIES

Stand-Alone Grills



MODEL: E1060s-4E1N-51-W*

COOKING SURFACE 1056 sq. inches [48" x 22"]

BTU's 115,000 Primary + (2) 11,000 Backburners
+ 60,000 Power Burner

Model shown with Power Burner and optional Magic View Window. Same model without the window is E1060s-4E1N-51
Also available with Double Side Burner or Single Side Burner options.



MODEL: E790s-4E1N-71*

COOKING SURFACE 792 sq. inches [36" x 22"]

BTU's 99,000 Primary + 13,000 Backburner
+ 30,000 Double Side Burner

Model shown with a double side burner. Also available with a single side burner option.



MODEL: E660s-4E1N-62*

COOKING SURFACE 660 sq. inches [30" x 22"]

BTU's 78,000 Primary + 11,000 Backburner
+ 15,000 Single Side Burner

Model shown with a single side burner. Also available with a double side burner option.

**All models available in natural gas or propane.*

AURORA

S E R I E S





FEATURE HIGHLIGHTS «

- » A grill of superior design and engineering--crafted for cooking versatility, durability and longevity.
- » 12 inches of firebox (top to bottom). Provides most complete convection cooking
- » Cast stainless steel "E" burners for consistent, even heat distribution, guaranteed for life (optional infrared burners are available)
- » Electronic push-to-light spark ignition system
- » Spring-assisted lid makes for feather-lite lifting.
 - » High BTU's per sq. in.
 - » Sleek styling with seamless control panel
 - » Built-in digital thermometer with meat probe
- » Optional recessed stainless steel rotisserie back burner and heavy-duty rotisserie kit
 - » Built-in storage rack for rotisserie spit rod
- » Built-in grill is convertible natural gas/propane --
 - No electricity needed
 - » Removable warming rack
 - » Easy to use Drip collection system



Model A790s-2E1N-62 Shown

AURORA

S E R I E S

Built-In Grills

EXCLUSIVE TO FIRE MAGIC®
FIRST EVER COMBINATION GAS
AND CHARCOAL GRILL!



MODEL: A830i-2E1N-CB*

COOKING SURFACE	828 sq. inches [24" x 18" + 22" x 18"]
BTU's	50,000 Primary + 16,000 B.B. + 26,000 Charcoal Ignitor
CUTOUT	50" w x 19½" d x 12" h



MODEL: A790i-2E1N*

COOKING SURFACE	792 sq. inches [36" x 22"]
BTU's	90,000 Primary + 23,000 B.B.
CUTOUT	37¼" w x 23½" d x 12" h



MODEL: A660i-2E1N-62*

COOKING SURFACE	660 sq. inches [30" x 22"]
BTU's	75,000 Primary + 19,000 B.B.
CUTOUT	32" w x 23½" d x 12" h



MODEL: A540i-2E1N-62*

COOKING SURFACE	540 sq. inches [30" x 18"]
BTU's	60,000 Primary + 19,000 B.B.
CUTOUT	32" w x 19½" d x 12" h



MODEL: A530i-2E1N-62*

COOKING SURFACE	528 sq. inches [24" x 22"]
BTU's	60,000 Primary + 16,000 B.B.
CUTOUT	25½" w x 23½" d x 12" h



MODEL: A430i-2E1N-62*

COOKING SURFACE	432 sq. inches [24" x 18"]
BTU's	50,000 Primary + 16,000 B.B.
CUTOUT	25½" w x 19½" d x 12" h

*All models available in natural gas or propane. All models also available without backburner & rotisserie. Change the 6th digit to a "1"



Model A530s-2E1N-62 Shown

AURORA

S E R I E S

Stand-Alone Grills



MODEL: A660s-2E1N-62*

COOKING SURFACE	660 sq. inches [30" x 22"]
BTU's	75,000 Primary + 19,000 Backburner + 15,000 Single Side Burner



MODEL: A540s-2E1N-62*

COOKING SURFACE	540 sq. inches [30" x 18"]
BTU's	60,000 Primary + 19,000 Backburner + 15,000 Single Side Burner



MODEL: A530s-2E1N-62*

COOKING SURFACE	528 sq. inches [24" x 22"]
BTU's	60,000 Primary + 16,000 B.B. + 15,000 Single Side Burner



MODEL: A430s-2E1N-62*

COOKING SURFACE	432 sq. inches [24" x 18"]
BTU's	50,000 Primary + 16,000 B.B. + 15,000 Single Side Burner



MODEL: A430s-2E1N-P6*

COOKING SURFACE	432 sq. inches [24" x 18"]
BTU's	50,000 Primary + 16,000 B.B.



MODEL: 5110-32
Optional stainless steel
LP tank shield

*All models available in natural gas or propane. All models also available without backburner & rotisserie. Change the 6th digit to a "1"

Legacy & Electric collection



Model E280s-1Z1E-P6 Shown



MODEL: 11-S1S1N-A

COOKING SURFACE	368 sq. inches [23" x 16"]
BTU's	42,000
CUTOUT	32¼" w x 19¾" d 12" h

- HEAVY-DUTY STAINLESS STEEL CONSTRUCTION
- OPTIONAL INFRARED BURNER
- AVAILABLE AS A CART, PATIO POST, OR IN-GROUND POST



**PATIO POST
MODEL: 21-S1S1N-P6**



MODEL: 5110-32
Optional stainless steel LP tank shield



MODEL: 34-S2S1N-A

COOKING SURFACE	540 sq. inches [30" x 18"]
BTU's	64,000
CUTOUT	41½" w x 20½" d

MODEL: 3C-S1S1N-A (SHOWN)

COOKING SURFACE	368 sq. inches [23" x 16"]
BTU's	42,000
CUTOUT	29½" w x 16½" d

MODEL: 31-S2S1N-A

COOKING SURFACE	368 sq. inches [23" x 16"]
BTU's	42,000
CUTOUT	24½" w x 19½" d

- HEAVY-DUTY STAINLESS STEEL CONSTRUCTION
- REGAL 1 SIZE OFFERS OPTIONAL ROTISSERIE BACK BURNER AND INFRARED BURNER OPTION
- DESIGNED TO DROP INTO THE TOP OF YOUR ISLAND



MODEL: E250s-1Z1E-P6

COOKING SURFACE	252 sq. inches [15½" x 16¼"]
-----------------	------------------------------



MODEL: E250t-1Z1E

COOKING SURFACE	252 sq. inches [15½" x 16¼"]
-----------------	------------------------------

Perfect for boats, condos, & apartment balconies where open flame cooking is prohibited

- Quality all-stainless steel construction, sleek contemporary styling
- High heat density- heats to more than 725°F
- Large heating element for faster and hotter cooking
- Precision thermostatic control system with digital temperature read out
- Thermometer probe for accurate meat temperatures
- Available in table top and pedestal models
- Easy tilt up heating element for easy cleaning
- Easy grip cool-to-touch handle
- Easy removable inner liners for cleaning (dishwasher safe)
- Full width drip tray
- Stainless Steel cooking grids
- Operates on a 120V, 20 amp circuit
- Optional rotisserie kit

Charcoal & Smoker c o l l e c t i o n



Model 12-SC01C Shown



NEW

MODEL: 24s-SMB

COOKING SURFACE	1640 sq. inches [5 Grids 17½" x 18¾" each]
-----------------	---

•24s-SM MODEL WITHOUT BOTTOM STORAGE DRAWER IS ALSO AVAILABLE



STAND ALONE
MODEL: 24-SC01C-61

MODEL: 24-SC01C-61 (SHOWN)

COOKING SURFACE	540 sq. inches [30" x 18"]
-----------------	----------------------------

MODEL: 22-SC01C-A

COOKING SURFACE	432 sq. inches [24" x 18"]
-----------------	----------------------------

BUILT-IN
MODEL: 14-SC01C-A



MODEL: 14-SC01C-A (SHOWN)

COOKING SURFACE	540 sq. inches [30" x 18"]
-----------------	----------------------------

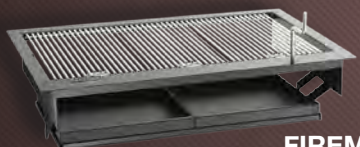
CUTOUT	32¼" w x 19¾" d x 12" h
--------	-------------------------

MODEL: 12-SC01C-A

COOKING SURFACE	432 sq. inches [24" x 18"]
-----------------	----------------------------

CUTOUT	26¼" w x 19¾" d x 12" h
--------	-------------------------

For a classic rounded oven hood change "SC" to "S1" in the part number (ex. 24-S101C-61). Option not available on patio or in-ground post models



FIREMASTER

MODEL: 3324

COOKING SURFACE	540 sq. inches [30" x 18"]
-----------------	----------------------------

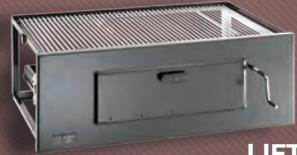
CUTOUT	31¼" w x 21¼" d x 12" h
--------	-------------------------

MODEL: 3329

COOKING SURFACE	368 sq. inches [23" x 16"]
-----------------	----------------------------

CUTOUT	24¼" w x 19¾" d x 12" h
--------	-------------------------

- DESIGNED TO DROP INTO THE TOP OF YOUR ISLAND
- ADJUSTABLE CHARCOAL PAN FOR EASY COOKING CONTROL



LIFT-A-FIRE SLIDE-IN

MODEL: 3334

COOKING SURFACE	540 sq. inches [30" x 18"]
-----------------	----------------------------

CUTOUT	32¼" w x 19¾" d x 12" h
--------	-------------------------

MODEL: 3339

COOKING SURFACE	368 sq. inches [23" x 16"]
-----------------	----------------------------

CUTOUT	24¼" w x 17¾" d x 12" h
--------	-------------------------

- CONSTRUCTED OF HEAVY-DUTY STEEL WITH DURABLE POWDER COATED ENAMEL FINISH
- ADJUSTABLE CHARCOAL PAN FOR EASY COOKING CONTROL



MODEL: 22-SC01C-G6 IN-GROUND POST (SHOWN)

COOKING SURFACE	432 sq. inches [24" x 18"]
-----------------	----------------------------

MODEL: 22-SC01C-P6 PATIO POST

COOKING SURFACE	432 sq. inches [24" x 18"]
-----------------	----------------------------

**Cooking grids and ovens (if desired) for Firemaster & Lift-A-Fire Slide-In must be ordered separately.*

GRILLING ACCESSORIES



Searing Station Model 3287-1 Shown

LIGHTING IN...



ECHELON POWER BURNER

MODEL: 19-4B2N-0

CUTOUT: 19" w x 18¾" d x 12" h

The Echelon Power Burner is the largest, most powerful side cooker available and provides the high heat that's perfect for wok cooking or frying a turkey! Offering a range of 3,000 to 60,000 BTU's. Available with porcelain cast iron or stainless steel grids.



ECHELON DOUBLE SEARING STATION

MODEL: 32884

CUTOUT: 19" w x 18¾" d x 12" h

With the Echelon Double Searing Station, prepare restaurant-quality steaks. When steaks are flash-cooked at 1200°, juices are locked and meats are tender and full of flavor. With 32,000 BTU's.



ECHELON SINGLE SEARING STATION

MODEL: 32874-1

CUTOUT: 14" w x 22¾" d x 12" h

Sear favorites such as ahi tuna and marbled fillet mignon to perfection. With 1200° of infrared heat.



ECHELON DOUBLE SIDE BURNER

MODEL: 32814

CUTOUT: 11½" w x 22¾" d x 12" h

Enjoy precise flame control on each burner to prepare side dishes and sauces for your meal. Two (2) 15,000 BTU's burners. Available with porcelain cast or stainless steel grids.



ECHELON SINGLE SIDE BURNER

MODEL: 32794-1

CUTOUT: 11½" w x 14" d x 12" h

The Echelon Single Side Burner features a 15,000 BTU's flame burner, precise flame control valve, and stainless steel cover. Available with porcelain cast grid.



POWER BURNER

MODEL: 19-S0B1N-0

CUTOUT: 19" w x 18¾" d x 12" h

The Aurora Power Burner is the largest, most powerful side cooker available. It provides a range of BTU's from 3,000 to 60,000. Available with porcelain cast iron or stainless steel grids.



DBL SEARING STATION

MODEL: 3288-1

CUTOUT: 19 w x 18¾ d x 12 h

With the Aurora Double Searing Station steaks are flash-cooked at 1200°, juices are locked and meats are tender and full of flavor. With 32,000 BTU's, the double searing station is a welcome companion to your Fire Magic Aurora grill.



SEARING STATION

MODEL: 3287-1

CUTOUT: 14" w x 22¾" d x 12" h

This single side burner flash cooks at 1200° locking in juices for tender meat and full flavor. Perfect for an amazing seared steaks.



DOUBLE SIDE BURNER

MODEL: 3281

CUTOUT: 11½" w x 22¾" d x 12" h

The Aurora Double side burner offers precise flame control on each burner to prepare side dishes and sauces for your meal. Two (2) 15,000 BTU's burners. Available with porcelain cast or stainless steel grids.



SINGLE SIDE BURNER

MODEL: 3279-1

CUTOUT: 11½" w x 14" d x 12" h

Features of this Aurora single side burner include a 15,000 BTU's flame burner, precise flame control valve, and stainless steel cover. Available with porcelain cast grid.

SINGLE SIDE BURNER COUNTER TOP

MODEL: 3280

CUTOUT: 8¾" w x 14¼" d

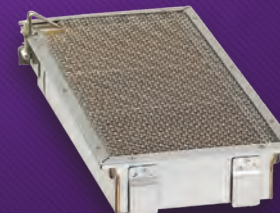
Drops into the top of island. Features include 15,000 BTU's sealed flame burner, precise flame control valve, and stainless steel cover.



INFRARED COOKING SYSTEM

MODEL: 3049, 3050, 3051

The Fire Magic Infrared Cooking System is ideal for searing steaks or when quick, high heat is desired. 25,000 BTU's with Natural or Propane LP gas. Can be factory-installed or retrofitted.





Blender with hood Model 3284A Shown



BUILT-IN BEVERAGE CENTER

MODEL: 1D-SSA

CUTOUT: 36³/₄" w x 23¹/₂" d x 12" h

- Top storage shelf with rail
- Faucet & sink with drain
- Removable bamboo cutting board
- Storage drawer
- Wine glass holder

BEVERAGE CENTER CART

MODEL: 2D-SSA

- Halogen lights (requires 110V AC)
- Covered heavy duty blender
- Insulated ice drawer with drain
- 2 condiment holders

ADDITIONAL STAND ALONE FEATURES:

- Waste basket & holder
- Stylish cart base
- 110V AC receptacle
- 2 large wine chillers
- Fold-down shelves
- Paper towel holder
- Insulated doors
- 2 ice storage basins
- 2 towel racks



REFRIGERATOR

MODEL: 3590A

CUTOUT: 20" w x 21¹/₄" d x 34¹/₈" h

4.2 cubic foot. Interior light and, security lock and key. Reversible door hinge and lock. When used outdoors, it must be installed in an enclosure.



PREMIUM REFRIGERATOR

MODEL: 3590DR

CUTOUT: 20" w x 21¹/₄" d x 34¹/₈" h

Fire Magic's Premium Refrigerator keeps beverages chilled to perfection. Custom-designed door is fabricated with a heavy-duty handle and radial corners for an exclusive look. Handy lock keeps contents safe. When used outdoors, it must be installed in an enclosure.



COMPACT ICE MAKER

MODEL: 3592

CUTOUT: 15¹/₂" w x 18¹/₂" d x 25¹/₂" h

Fire Magic's new Ice Maker eliminates trips inside to replenish your ice supply. Door handle complements existing Fire Magic doors.



KEGERATOR

MODEL: 3591

CUTOUT: 24¹/₂" w x 24¹/₂" d x 37" h

Accommodates 60-litre beer kegs (CO₂ tank and hardware are included). LED display, reversible door hinge, black/chrome beer tower dispenser, drip tray and optional swivel casters for portability (Keg not included).



SINK & FAUCET

MODEL: 3587 & 3588

CUTOUT: 14" w x 14" d

Adds convenience and functionality to your outdoor kitchen, so clean-up can be done grill side. Purchase separately or together. Sink measures 15" x 15" x 6" and requires a 17" clearance underneath.



BAR CADDY

MODEL: 1D-S0

CUTOUT: 14¹/₄" w x 23³/₄" d x 12" h

Bar Caddy comes equipped with a towel bar, bottle opener, sliding storage drawer, two stainless steel bottle sleeves and an installation hanger. Available with the optional steam warming accessory.

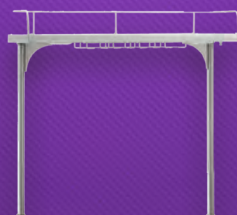


BLENDER W/ HOOD

MODEL: 3284A

CUTOUT: 8³/₄" w x 14¹/₄" d

Fire Magic's Blender is the perfect companion for any outdoor kitchen, bar caddy or beverage center. The attractive and sturdy stainless steel cover protects the 675-watt motor from the elements.



LIGHTED BEV. CENTER TOP

MODEL: 1D-S-TOP

This stemware rack and light bar fits the bill when island space is tight. Includes transformer.



BAMBOO CUTTING BOARD

MODEL: 3582-1

This durable and functional Bamboo Cutting Board is perfect for preparing meats and vegetables for grilling. 12" x 14".

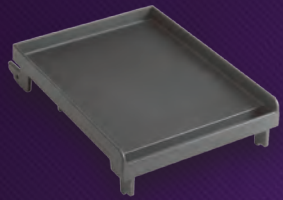


CUT & CLEAN COMBO

MODEL: 53816

CUTOUT: 8³/₄" w x 4" d

Installed in a grill island counter top, this cleverly designed accessory lets you slice and dice on a Fire Magic bamboo cutting board, then sweep debris right into the Fire Magic trash receptacle or basic trash can via a deep stainless steel trash chute. Chute measures 14³/₄".



GRIDDLE
MODEL: 3512A OR 3513A

Griddle available for the Fire Magic double side burner as well as Echelon and Aurora grills. Cook eggs, bacon, and fluffy pancakes. Enjoy breakfast in the great outdoors! Also great for fajitas!



WOK
MODEL: 3572

Hard-anodized stick-resistant lined interior surface measures 14" in diameter.



GRILL BRUSH
MODEL: 3576-1

The brass bristles on Fire Magic's Grill Brush make clean up fast and easy. Includes one replacement brush head. Replacement brush heads also available.



FOUR-PIECE TOOL SET
MODEL: 3575

Includes a fork, spatula, knife and tongs. Constructed of quality stainless steel.



DISPOSABLE DRIP TRAY LINER
MODEL: 3557 (4-PACK)

Custom-designed for Fire Magic grills and sold in packs of 4, these convenient disposable drip tray liners reduce the risk of grease fires.



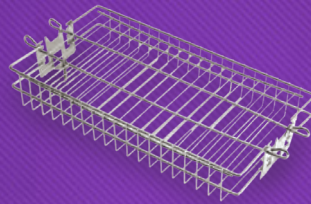
CHARCOAL BASKET
MODEL: 3562-1 or 3562-2

Cooking with wood chunks or charcoal is easier than ever. Basket sits on top of the burner, gas burners ignite the chunks or coals. Bottom tray catches ashes for easy clean-up.



CHICKEN HOLDER
MODEL: 3617E

Enjoy a golden, succulent chicken the quick and easy way!



FISH BASKET
MODEL: 3618

A versatile, stainless steel basket for skewers, burgers, ribs or fish.



TURKEY FRYER KIT
MODEL: 3570

You'll be amazed at how tender a deep-fried turkey can be. Kit includes pot, inner basket with sturdy handle and thermometer probe. Great as a crab or corn pot.



TURKEY HOLDER
MODEL: 3615E

This sturdy holder is also perfect for beef, pork and lamb roasts.



ECHOLON DIAMOND THERMOMETER RECEIVER
MODEL: 3566

Displays transmitted data from the grill's thermometer and will emit a sound when the alarm goes off. Can also be used as a timer.



STRAIGHT LINE GAS VALVE
MODEL: AV-30

Can be attached to gas line for additional safety.



SAFETY TIMER
MODEL: 3090 (3 HOUR TIMER)
MODEL: 3092 (1 HOUR TIMER)

Fire Magic's 3 Hour, and new 1 Hour, Safety Timers offers additional safety and automatically shuts off gas flow at pre-set times. Easy to install. Great for apartment and condominium use.



TRASH CONTAINER
MODEL: 53825-T

Constructed of stainless steel with a hands-free foot lever, the door easily slides open to reveal a 10.5 gallon trash can. Fully enclosed.



PAPER TOWEL HOLDER
MODEL: 53812

Accepts and protects regular or jumbo rolls. Premium 304 stainless steel ensures a uniform look for all Fire Magic built-in products.



**PRE-FABRICATED ISLAND
MODEL: DC790-CS-84C**

Model DC790-CS-84C

- 790 available in a beautiful stacked stone complete with Midnight Copper granite counter top
- 90" wide x 34" deep x 38 1/2" high
- Requires A790i or E790i grill, Double Side Burner 32814 and 3281, Front Access Drawer 43830-S, 33830-S, 43830-SW or 33830-SW. Side Panel Access Door 43920-SR/SL or 33920-SR/SL
- Sturdy interior stainless steel construction
- Exterior faux stacked stone panels are made of magnesium oxide concrete

ALSO AVAILABLE



**PRE-FABRICATED ISLAND
MODEL: DC430-CS-60C**

Model DC430-CS-60C

- 430 available in a beautiful stacked stone complete with Midnight Copper granite counter top
- 66" wide x 24" deep x 36 1/2" high
- Requires A430i Grill, 3280 Side Burner, Side Panel Access Door 43920-SR/SL or 33920-SR/SL
- Sturdy interior construction
- Exterior faux stacked stone panels are made of magnesium oxide concrete



VENT HOOD FEATURES

- Available in 36", 42" and 60" widths
- Powerful 1400 CFM dual fan specifically designed and engineered to quickly--and quietly--extract smoke, heat and odors from the front and rear of the hood
- High quality brushed 304 stainless steel construction with seamless edges
- Dual LED under mount lamps (three lamps on 60" unit) provide generous light for evening grilling
- Blue bezel illuminated push buttons reveal lamps and fan in the ON position at a glance
- Anodized aluminum filters remove easily and are dishwasher safe
- Innovative low voltage operation
- Easy install mounting bracket included
- Indoor/Outdoor listed
- Available in a model with a 1000 CFM fan (36-VH-4)



- VENT HOOD
MODEL: 36-VH-4
MODEL: 36-VH-3
MODEL: 42-VH-3
MODEL: 60-VH-3**





DOORS & DRAWERS



Flush Mounted

MOUNTED DOORS AND DRAWERS (5 Series)

Featuring heavy-duty handles with cast stainless steel mounts, these doors and drawers are designed to close flush with the frame with a strong magnetic latch. Premium Doors and Drawers are filled with polyurethane foam for insulation and a solid feel. Available in a variation of door and drawer configurations and sizes. With so many options there is a combination available to meet any outdoor kitchen storage need.

MODEL: 53920-SL



Premium

DOORS AND DRAWERS (4 Series)

Stylized with rounded edges to match the contours of your Fire Magic Grill, these doors and drawers feature heavy-duty handles with cast stainless steel mounts and are mounted outside the frame. A strong magnetic latch ensures secure closure and polyurethane foam gives a solid feel and insulation. Available in 17 door and 10 drawer configurations and sizes.

MODEL: 43920-SL



Select

DOORS AND DRAWERS (3 Series)

These doors and drawers feature outside mounting, double wall and square edge construction, a slim tubular stainless steel handle and heavy-duty magnetic latch. Available in 16 door and 10 drawer configurations and styles.

MODEL: 33920-SL



Legacy

DOORS AND DRAWERS (2 Series)

Outside mounted with angled edges, the Legacy Doors and Drawers feature a slam latch for secure closure. Available in 12 door and 4 drawer configurations and sizes. Select styles available with black powder-coated finish. The Legacy doors and drawers are the most economical for builders and homeowners alike.

MODEL: 23920-SL

Flush Mounted

***AVAILABLE WITH LEFT OR RIGHT DOOR HINGE**

- Sleek flush design
- Handles complement Echelon and Aurora series grills
- Double wall construction
- Insulated doors for solid sound and feel
- 304 Stainless Steel
- Cut-out is height x width x depth



DOUBLE DOORS WITH DUAL DRAWERS
MODEL: 53930S-22
CUT-OUT: 21" x 30 1/2" x 20 1/2"



SINGLE DOOR WITH DUAL DRAWERS*
MODEL: 53820-SR
CUT-OUT: 21" x 14 1/2" x 20 1/2"



SINGLE ACCESS DOOR*
MODEL: 53920-SL
CUT-OUT: 21" x 14 1/2"



SINGLE ACCESS DOORS*
MODEL: 53924-SL
CUT-OUT: 25" x 17 1/2"



SINGLE ACCESS DOORS*
MODEL: 53917-SR
CUT-OUT: 18" x 24 1/2"



SINGLE ACCESS DOORS*
MODEL: 53914-SR
CUT-OUT: 15" x 20 1/2"



DOUBLE ACCESS DOORS
MODEL: 53930S
CUT-OUT: 21" x 30"



DOUBLE ACCESS DOORS
MODEL: 53934S
CUT-OUT: 15" x 30"



DOUBLE ACCESS DOORS
MODEL: 53938S
CUT-OUT: 16" x 39"



TRIPLE DRAWER
MODEL: 53803
CUT-OUT: 26 1/4" x 14 1/2" x 20 1/2"



DOUBLE DRAWER
MODEL: 53802
CUT-OUT: 15 3/4" x 14 1/2" x 20 1/2"



SINGLE DRAWER
MODEL: 53801
CUT-OUT: 5 1/4" x 14 1/2" x 20 1/2"



DBL DOORS WITH TRASH TRAY & DUAL DRAWERS
MODEL: 53930S-12
CUT-OUT: 21" x 30 1/2" x 20 1/2"



ELECTRIC WARMING DRAWER
MODEL: 53830-SW
CUT-OUT: 14 1/2" x 32 1/4" x 22"

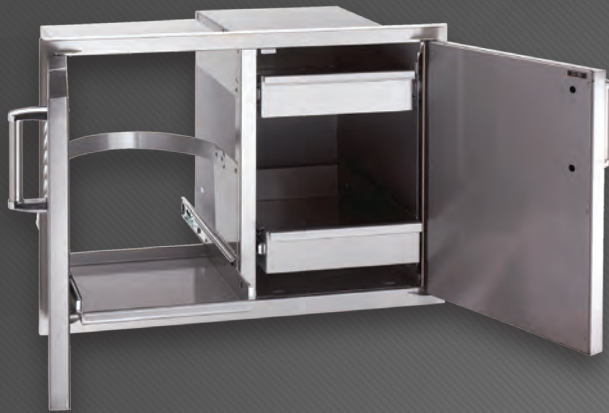


MASONRY DRAWER
MODEL: 53830-S
CUT-OUT: 14 1/2" x 32 1/4" x 22"

Also available: (not shown)

- | | |
|--------------------------------|---|
| MODEL: 53914-SL | CUT-OUT: 15" x 20 1/2" |
| MODEL: 53917-SL | CUT-OUT: 18 1/2" x 24 1/2" |
| MODEL: 53924-SR | CUT-OUT: 25" x 17 1/2" |
| MODEL: 53820-SL | CUT-OUT: 21" x 14 1/2" x 20 1/2" |
| MODEL: 53930S-12T | CUT-OUT: 21" x 30 1/2" x 20 1/2" |
| MODEL: 53820-TSR or TSL | CUT-OUT: 21" x 14 1/2" x 20 1/2" |

Premium



***AVAILABLE WITH
LEFT OR
RIGHT DOOR HINGE**

- Sleek radius corners
- Handles complement Echelon and Aurora series grills
- Sturdy double wall construction
- Insulated doors for a solid sound and feel
- 304 Stainless Steel
- Cut-out is height x width x depth

DOUBLE DOORS W/ TANK TRAY, LOUVERS, & DUAL DRAWERS

MODEL: 43930S-12T

CUT-OUT: 21" x 30 1/2" x 20 1/2"



SINGLE DOOR WITH DUAL DRAWERS*

MODEL: 43820-SL

CUT-OUT: 21" x 14 1/2" x 20 1/2"



SINGLE ACCESS DOOR*

MODEL: 43920-SR

CUT-OUT: 21" x 14 1/2"



**SINGLE ACCESS DOOR WITH TANK TRAY
AND LOUVERS***

MODEL: 43820-TSL

CUT-OUT: 21" x 14 1/2" x 20 1/2"



SINGLE ACCESS DOOR*

MODEL: 43917-SR

CUT-OUT: 18" x 24 1/2"



SINGLE ACCESS DOOR*

MODEL: 43914-SR

CUT-OUT: 15" x 20 1/2"



DOUBLE ACCESS DOORS

MODEL: 43930S

CUT-OUT: 21" x 30"



**DOUBLE DOORS WITH TRASH TRAY,
AND DUAL DRAWERS**

MODEL: 43930S-12

CUT-OUT: 21" x 30 1/2" x 20 1/2"



DOUBLE ACCESS DOORS

MODEL: 43934S

CUT-OUT: 15" x 30"



TRIPLE DRAWER

MODEL: 43803

CUT-OUT: 26 1/4" x 14 1/2" x 20 1/2"



DOUBLE DRAWER

MODEL: 43802

CUT-OUT: 15 3/4" x 14 1/2" x 20 1/2"



SINGLE DRAWER

MODEL: 43801

CUT-OUT: 5 1/4" x 14 1/2" x 20 1/2"



DOUBLE DOORS WITH 2 DUAL DRAWERS

MODEL: 43930S-22

CUT-OUT: 21" x 30 1/2" x 20 1/2"



ELECTRIC WARMING DRAWER

MODEL: 43830-SW

CUT-OUT: 13" x 31" x 20 1/2"



MASONRY DRAWER

MODEL: 43830-S

CUT-OUT: 13" x 31" x 20 1/2"

Also available: (not shown)

MODEL: 43914-SL

CUT-OUT: 15" x 20 1/2"

MODEL: 43917-SL

CUT-OUT: 18" x 24 1/2"

MODEL: 43924-SR or SL

CUT-OUT: 25" x 17 1/2"

MODEL: 43920-SL

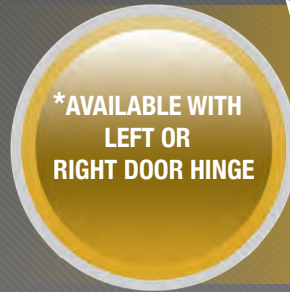
CUT-OUT: 21" x 14 1/2"

MODEL: 43820-TSR

CUT-OUT: 21" x 14 1/2" x 20 1/2"

Select

- Stainless steel tubular handles
- Double wall construction
- 304 Stainless Steel
- Cut-out is height x width x depth



SINGLE DOOR WITH DUAL DRAWERS*
MODEL: 33820-SR
CUT-OUT: 21" x 14 1/2" x 20 1/2"



ELECTRIC WARMING DRAWER
MODEL: 33830-SW
CUT-OUT: 13" x 31" x 20 1/2"



MASONRY DRAWER
MODEL: 33830-S
CUT-OUT: 13" x 31" x 20 1/2"



DOUBLE DOORS WITH TANK TRAY, LOUVERS, AND DUAL DRAWERS
MODEL: 33930S-12T
CUT-OUT: 21" x 30 1/2" x 20 1/2"



TRIPLE DRAWER
MODEL: 33803
CUT-OUT: 26 1/4" x 14 1/2" x 20 1/2"



DOUBLE DRAWER
MODEL: 33802
CUT-OUT: 15 3/4" x 14 1/2" x 20 1/2"



SINGLE DRAWER
MODEL: 33801
CUT-OUT: 5 1/4" x 14 1/2" x 20 1/2"



DOUBLE DOORS WITH 2 DUAL DRAWERS
MODEL: 33930S-22
CUT-OUT: 21" x 30 1/2" x 20 1/2"



SINGLE ACCESS DOOR W/ TANK TRAY AND LOUVERS*
MODEL: 33820-TSL
CUT-OUT: 21" x 14 1/2" x 20 1/2"



SINGLE ACCESS DOOR*
MODEL: 33914-SR
CUT-OUT: 15" x 20 1/2"



SINGLE ACCESS DOOR*
MODEL: 33924-SR
CUT-OUT: 25" x 17"



SINGLE ACCESS DOOR*
MODEL: 33920-SR
CUT-OUT: 21" x 14 1/2"



DOUBLE ACCESS DOORS
MODEL: 33930S
CUT-OUT: 21" x 30"



SINGLE ACCESS DOOR*
MODEL: 33917-SR
CUT-OUT: 18" x 24 1/2"

Also available: (not shown)

MODEL: 33914-SL	CUT-OUT: 15" x 20 1/2"
MODEL: 33917-SL	CUT-OUT: 18" x 24 1/2"
MODEL: 33920-SL	CUT-OUT: 21" x 14 1/2"
MODEL: 33820-SL	CUT-OUT: 21" x 14 1/2" x 20 1/2"
MODEL: 33820-TSR	CUT-OUT: 21" x 30 1/2" x 20 1/2"
MODEL: 33930S-12	CUT-OUT: 21" x 30 1/2" x 20 1/2"

Legacy

- Single wall construction with black latch handle
- Most economical door style
- Most doors are reversible for left or right access
- Single Access Doors also available in black powder coat finish
- 304 Stainless Steel
- Cut-out is height x width x depth



SINGLE DOOR WITH DUAL DRAWERS
MODEL: 23820-S
CUT-OUT: 20 ½" x 14 ½" x 20 ½"



MASONRY DRAWER
MODEL: 23830-S
CUT-OUT: 13" x 31" x 20 ½"



SINGLE ACCESS DOOR ↻
MODEL: 23917-S
CUT-OUT: 17 ½" x 24 ½"



SINGLE ACCESS DOOR ↻
MODEL: 23920-S
CUT-OUT: 20 ½" x 14 ½"



DRAWER WITH PROPANE DOOR ASSY
MODEL: 25914-S
CUT-OUT: 27 ¾" x 14 ½" x 20 ½"



SINGLE ACCESS DOOR WITH LOUVERS
MODEL: 23920-1-S
CUT-OUT: 20 ½" x 14 ½"



DOUBLE ACCESS DOOR
MODEL: 23930-S
CUT-OUT: 20 ½" x 30"



SINGLE ACCESS DOOR (RIGHT OR LEFT) WITH TANK TRAY AND LOUVERS
MODEL: 23920-1T-S
CUT-OUT: 20 ½" x 14 ½" x 20 ½"



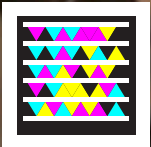
DOUBLE DOORS WITH DUAL DRAWERS AND TRASH TRAY
MODEL: 23930S-12
CUT-OUT: 21" x 30 ½" x 20 ½"



VENTING PANEL, LOUVERED STAINLESS STEEL
MODEL: 5510-01
CUT-OUT: 3 ¾" x 12 ¾"

Also available: (not shown)
SINGLE ACCESS DOORS ↻

MODEL: 23912-S	CUT-OUT: 12 ½" x 18 ½"
MODEL: 23918-S	CUT-OUT: 18 ½" x 12 ½"
MODEL: 23924-S	CUT-OUT: 24 ½" x 17 ½"
MODEL: 23914-S	CUT-OUT: 14 ½" x 20 ½"



FIREMAGIC[®]

RHSPETERSON co.

14724 PROCTOR AVE. CITY OF INDUSTRY, CA 91746

WWW.RHPETERSON.COM



FIRE MAGIC OUTDOOR GAS GRILL WARRANTY

LIFETIME WARRANTY

FIRE MAGIC CAST STAINLESS STEEL BURNERS, STAINLESS STEEL ROD COOKING GRIDS, AND STAINLESS STEEL HOUSINGS ARE WARRANTED FOR AS LONG AS YOU OWN YOUR FIRE MAGIC GRILL.

FIFTEEN YEAR WARRANTY

FIRE MAGIC BRASS BURNERS, BRASS VALVES, MANIFOLD ASSEMBLIES, AND BACKBURNER ASSEMBLIES (EXCEPT IGNITION SYSTEMS) ARE WARRANTED FOR FIFTEEN (15) YEARS.

TEN YEAR WARRANTY

FIRE MAGIC ELECTRIC GRILLS, ELECTRIC GRILL STAINLESS STEEL COOKING GRIDS, AND ELECTRIC GRILL STAINLESS STEEL HOUSING ARE WARRANTED FOR TEN (10) YEARS.

FIVE YEAR WARRANTY

INFRARED BURNERS, CHARCOAL STAINLESS STEEL GRILLS, AND SMOKERS (EXCEPT FOR THE CHARCOAL PAN AND ASH TRAY) ARE WARRANTED FOR FIVE (5) YEARS

THREE YEAR WARRANTY

FIRE MAGIC SIDEBURNERS AND ALL OTHER FIRE MAGIC GRILL COMPONENTS (EXCEPT IGNITION SYSTEMS AND ELECTRICAL PARTS) ARE WARRANTED FOR THREE (3) YEARS.

ONE YEAR WARRANTY

FIRE MAGIC IGNITION SYSTEMS (EXCLUDING BATTERIES), ELECTRICAL COMPONENTS (INCLUDING LIGHTS AND THERMOMETER), CHARCOAL PAN AND ASH TRAY, AND GRILL ACCESSORIES ARE WARRANTED FOR ONE (1) YEAR.