

CASTOHN®

true to form



Contents



Landscape Products

Why Wet Cast.	3
Smooth Alpine Paver Collection.	4
Mountain Slate Paver Collection	5
42" Super Paver.	6
Linear Slate	7
Path and Stepping Stones.	8
Stria Steps	9
Wall Caps	10
Large Paver Installation	11
Warranty.	12



WHY WET CAST?

Wet cast brings out the fine details. Our modern wet cast technology consistently delivers the vivid colors, realistic shapes, and natural textures we all want to adorn our indoor and outdoor living spaces.

THE CAST^{OH}N[®] DIFFERENCE

Our in-house design team doesn't just follow trends, it creates them. Our vision for the future of outdoor design enables us to develop a full line of architectural accessories that are built to last.

Every day, we're leveraging the latest engineering methods and technologies to produce high-quality elements that make your homes, gardens, and other outdoor living spaces even more beautiful.

Typical Dry Cast

Machine pressed shapes, grainy, fake joints, and harsh edges.



8 seconds in the mold

Rough abrasive textures

CAST^{OH}N[®] Wet Cast

Natural stone castings with a realistic look and feel.



- More natural color & appearance
- Smoother & stronger
- Tighter surface matrix

8 hours in the mold

Authentic stone textures

VS.

All products are made in the U.S.A

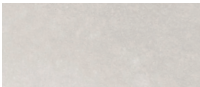
Smooth Alpine Paver Collection

Large Paver Series

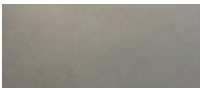
- Uniform size and thickness for fast installation
- Large format paver for timeless and contemporary look
- Available for pedestal installations (as a special order)
- Natural appearance due to slight color variations
- Less prone to chipping due to eased edges



Available Colors:



Pearl

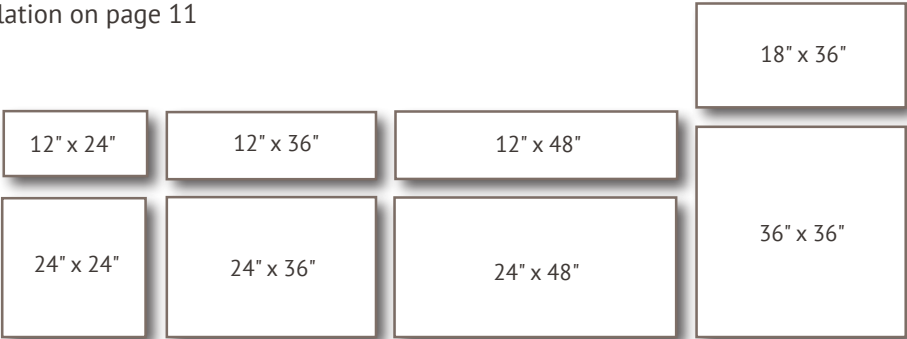


Graphite

Colors may vary,
see actual product.

Product Data (nominal sizes)

- 12"x24"x2-1/2" – 2 square feet – 63 pounds - Pallet = 32 pieces / 64 square feet / 2,100 pounds
- 12"x36"x2-1/2" – 3 square feet – 95 pounds - Pallet = 24 pieces / 72 square feet / 2,300 pounds
- 12"x48"x2-1/2" – 4 square feet – 125 pounds - Pallet = 24 pieces / 96 square feet / 3,100 pounds
- 18"x36"x2-1/2" – 4-1/2 square feet – 145 pounds - Pallet = 16 pieces / 72 square feet / 2,400 pounds
- 24"x24"x2-1/2" – 4 square feet – 125 pounds - Pallet = 16 pieces / 64 square feet / 2,100 pounds
- 24"x36"x2-1/2" – 6 square feet – 190 pounds - Pallet = 8 pieces / 48 square feet / 1,600 pounds
- 24"x48"x2-1/2" – 8 square feet – 250 pounds - Pallet = 8 pieces / 64 square feet / 2,100 pounds
- 36"x36"x2-1/2" – 9 square feet – 285 pounds - Pallet = 8 pieces / 72 square feet / 2,300 pounds
- Dimensional Tolerance L&W $\pm 3/16"$ & H $\pm 1/8"$
- Minimum of 1/4" joints required
- Use caution when considering smooth pavers in a wet application
- See Large Paver Installation on page 11



Mountain Slate Paver Collection

Large Paver Series

- Authentic, natural slate texture
- Consistent 2-1/2" thickness
- Uniform thickness and accurate dimensions equal fast installations and beautiful end results
- Natural appearance due to slight color variations
- Less prone to chipping due to eased edges



*Pavers shown with wet-look sealer

Available Color:



Pearl



Graphite

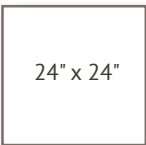
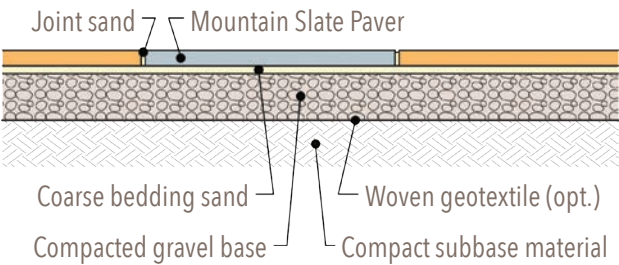


Chocolate
Colors may vary,
see actual product.

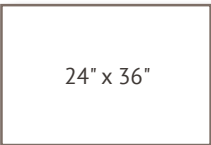
Product Data (nominal size)

- 24"x24"x2-1/2" – 4 square feet – 125 pounds - Pallet = 16 pieces / 64 square feet / 2,100 pounds
- 24"x36"x2-1/2" – 6 square feet – 190 pounds - Pallet = 8 pieces / 48 square feet / 1,600 pounds
- 24"x48"x2-1/2" – 8 square feet – 250 pounds - Pallet = 8 pieces / 64 square feet / 2,100 pounds
- 36"x36"x2-1/2" – 9 square feet – 285 pounds - Pallet = 8 pieces / 72 square feet / 2,300 pounds
- Dimensional Tolerance L&W $\pm 3/16"$ & H $\pm 1/8"$
- Minimum of 1/4" joints required
- See Large Paver Installation on page 11

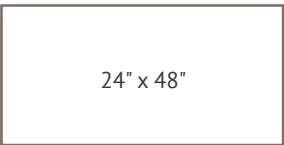
Typical Installation



24" x 24"



24" x 36"



24" x 48"



36" x 36"

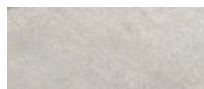
42" Super Pavers

Large Paver Series

- Prefinished flamed stone texture means no formwork or on-site finishing needed
- Fast installation, install year-round in any weather
- Factory controlled cure for longer life
- Large format paver for timeless and contemporary installations
- Natural appearance due to slight color variations
- Less prone to chipping due to eased edges



Available Color:



Pearl



Graphite

*colors may vary,
see actual pallets

Product Data

- 42" x 42" x 4"
- 12-1/4 square feet each
- 600 pounds each
- Dimensional Tolerance L&W $\pm 3/16"$ & H $\pm 1/8"$
- Minimum of 1/4" joints required
- See Large Paver Installation on page 11

Pallet

- 6 pieces per pallet
- 73-1/2 square feet per pallet
- Pallet weight = 3,600 pounds

Finish

- Flamed texture



10" x 20" Linear Slate

- Natural slate texture
- Consistent size and thickness for fast installation
- Natural appearance due to slight color variations
- Larger size and timeless slate texture create a simple yet elegant look and feel
- Use for accents, transition borders, and stair approaches



*Each region produces unique colors. Please refer to available colors below for colors in your region.

Available Colors:



Pearl



Graphite



Chocolate

*colors may vary,
see actual pallets

Product Data

- 10" x 20" x 2"
- 34 pounds each piece
- 1.4 square feet per piece

Pallet

- 64 pieces per pallet
- 89.6 square feet per pallet
- Pallet weight = 2,180 pounds
- 8 pieces per layer, 8 layers per pallet



Path & Stepping Stones

Easily lay a charming garden walkway with various colors and textures that will compliment your existing backyard environment.

- 8 unique shapes for a rustic, authentic stone appearance
- Wet cast for long term durability
- Natural appearance due to slight color variations
- Crowned top keeps your foot placement dry



Available Colors:



Pearl



Graphite

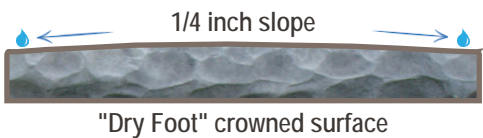


Chocolate

*colors may vary,
see actual pallets

Pallet

- Avg. stone size 17" x 20" x 2-1/2"
- 24 pieces per pallet
- Pallet weight = 1,420 pounds



Stria Steps

The one of a kind Stria Step creates a natural, non-slip addition to any landscape.

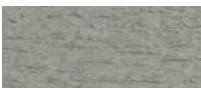
- Significant striated texture creates a non-slip surface
- Unique texture replicates natural weathering
- Natural appearance due to slight color variations
- Consistent 6-inch rise equals fast installation and safe results



Available Color:



Pearl

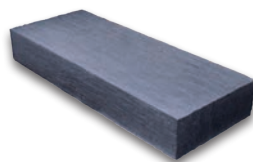


Graphite

*colors may vary,
see actual pallets

Product Data

- Palletized with one size per pallet
- 6 steps per pallet



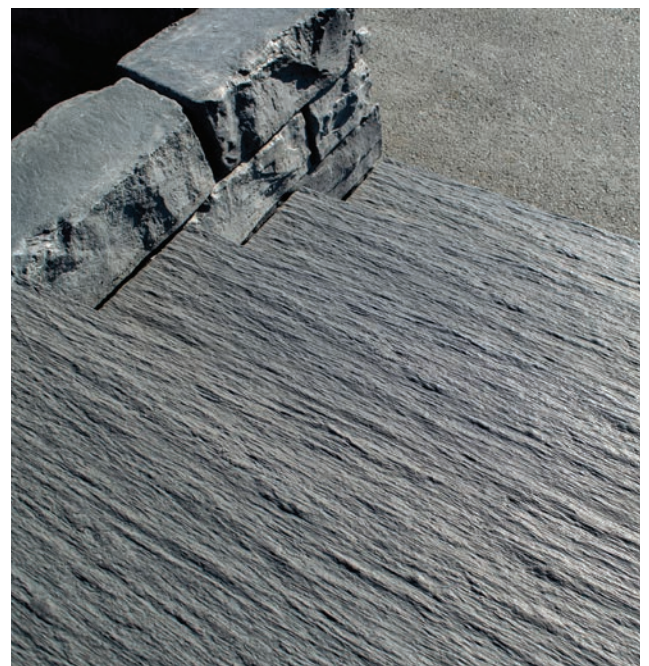
36" x 18" x 6"
340 pounds each
2,040 pounds per pallet



BL980 Step Lifter



48" x 18" x 6"
450 pounds each
2,700 pounds per pallet



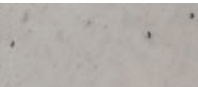
Stone Texture, Chiseled Edge Caps

Dress up your walls and columns with a natural stone appearance that will be both functional and asthetically pleasing.

- Wet cast for long term durability
- Surface is gentle and comfortable to sit on
- Natural appearance due to slight color variations
- Consistent 2-1/2" height provides for fast and easy installation



Available Colors:



Pearl



Graphite

*colors may vary,
see actual pallets



Flat Wall Cap

- Stone texture with chiseled edges and 2-1/2" high face

Available Sizes:

10" x 36", 12" x 36", 14" x 36"



Flat Post Cap

- Stone texture with chiseled edges and 2-1/2" high face

Available Sizes:

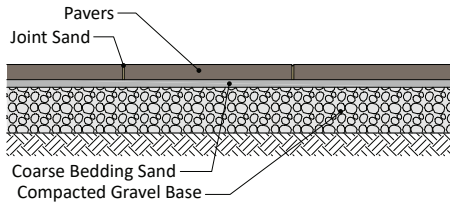
24" x 24", 30" x 30"



Large Paver Installation



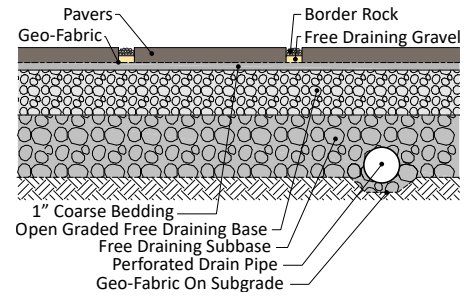
READ BEFORE INSTALLING



Sand Set



Joints 1/4" (min.)



Permeable Set

Installations shown above are examples only. Consult a design professional for site specific installation requirements.

Installation Quick Tips - Large Paver Series

Installation should meet all local building code requirements.

Handling Large Pavers

- Handle with care. Avoid damaging large pavers with forklifts and lifting equipment/tools.
- Store pallets of pavers in single-height rows. **DO NOT STACK PALLETs OF PAVERS**
- Do not push pallets against each other with forklifts or other equipment.

Installation

- Lift pavers carefully by hand or with lifting equipment. Do not drag one paver across the top of another paver. Lift in way that will not chip the edges of the pavers.
- **Install with a minimum of 1/4" joints to ease installation and alignment.** Proper joints will help with alignment and prevent chipping.
- Avoid "bumping" or contacting adjacent pavers when installing. "Bumping" pavers can cause edge chips and scratches on the surface.
- Protect pavers during the construction process. Brush off all dirt, sand and gravel from installed pavers and cover with a protective landscape fabric or other protective material that will not stain the pavers.

Cleaning

- Wash all dirt and construction debris with the mildest cleaning method that works. Test clean a small inconspicuous area to determine what method works best before cleaning the entire project.
- CAUTION – Some cleaning techniques and products can damage the surface of the pavers and alter the appearance. Castohn does NOT recommend the use of a pressure washer to clean large pavers.
- If using polymeric sand, ensure pavers are thoroughly clean and dry prior to sealing.

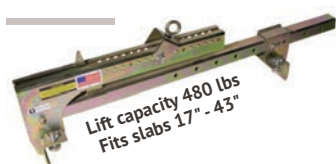
Sealing

- Large pavers can be installed and left unsealed in many applications. However, exterior applications will weather over time and age. Some sealers will help protect the surface from water penetration and even enhance the color of the pavers. Some sealers can also help with preventing staining from food or beverage spills.
- If a sealer is to be used, always test a small inconspicuous area with the sealer to ensure it will perform as anticipated. The WRONG sealer can negatively impact the appearance of the large paver installation. Always test and follow manufacturer's recommendations for installing the sealer.

Joint Sand

- The usage of joint sand can be tricky with high end pavers like these. We do not recommend most polymeric joint sands for these products as they may cause residual hazing on the surface. Please consult with your Castohn representative for further information.

Tools



Large Slab Lifter



Slab Lifter



Ergo Assist XL



Ergo Assist



LIFETIME LIMITED WARRANTY

Castohn provides a lifetime limited warranty on the structural integrity of its manufactured product line used in residential applications. The warranty is extended to the original purchaser and is not transferable. Castohn products installed in accordance with our guidelines and industry standards that are deemed to be structurally defective will be replaced with product of equal value. Removal and replacement labor cost is not the responsibility of Castohn. Color matching and product availability are not guaranteed. Proof of purchase and/or installation contract must be made available prior to or at the time of inspection by an authorized Castohn representative. Other exclusions apply.

*For optimal color blending, mix and install product from several pallets simultaneously. Colors in catalog may vary from actual product, and some items and colors may require a short lead time to produce.

CASTOHN®
true to form

South Region

2025 Webster Ave • Waco, TX 76706
Ph 254.339.1144 E Info@Castohn.com



Castohn.com